



**ROADLINE PRODUCTS INC. U.S.A.**

# The Ultimate Airless Spray System



**Model TPMT** shown with various options.

# Model TPMT

The Roadline Products Model TPMT is equipped with a hydraulic-driven airless pump. There are several advantages in an airless paint system over a conventional paint system.

Some of these advantages are less over spray, savings in material, faster clean-up, less noise, no paint pots to clean, and higher productivity; which ensures a higher level of PUBLIC SAFETY!

## Standard Equipment

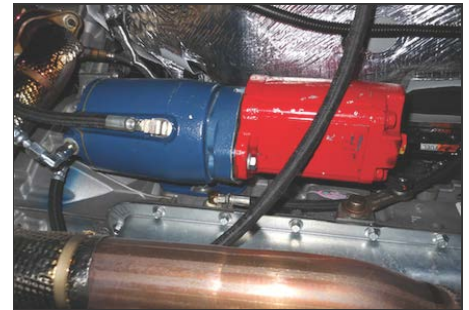
- 12 GPM Hydraulic Pump
- 2 Complete Airless Paint Systems
- Stencil Rack . . . (Customer Design)
- 2 Removable Gun Holsters
- Below Deck Tool Box
- Traffic Cone Storage
- 30-Gallon Headboard Hydraulic Reservoir
- Paint Well (7 5-Gallon Bucket Capacity)

## Optional Equipment

- Additional Complete Airless Paint System
- Glass Sphere System
- Hydraulic-Driven Compressor System
- Arrow Board or Message Board
- Rotating Lights
- Work Lights For Night Time Operation
- Custom-Design Toolboxes / Storage
- Inverter For Small Tool Operation



Multiple hydraulic-driven paint systems can be supplied. Easy access to hydraulic controls are standard.



The power take-off (PTO) system's 12-GPM hydraulic pump can provide power to support most customer needs.

The Model TPMT is capable of spraying two colors. Stencil rack will carry all necessary standard stencils for legends. Compressor aboard for blowing off pavement or applying glass spheres. All compressor controls are located at rear of vehicle.



Hose reels mounted below deck with top and side doors for easy maintenance.

***"Truly a cost effective investment"***

Distributed By:

Manufactured By:



13253 Stanbridge Avenue, Downey, CA 90242  
Main: (562) 803-4447 Shop: (562) 404-8889